

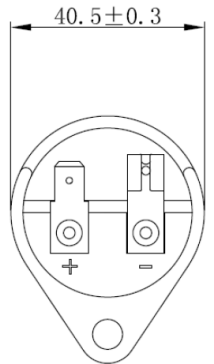
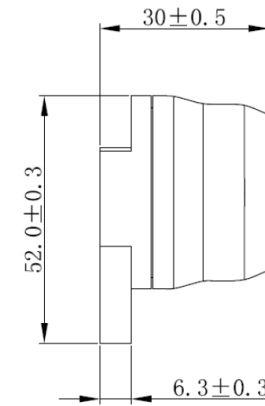
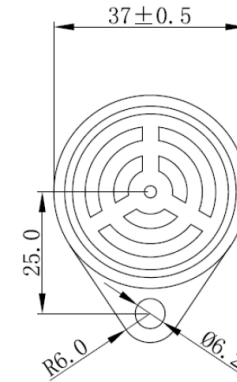
PART NR.
AE-ZZ053

COUNTRY OF ORIGIN
Taiwan

STANDARDS
REACH and RoHS compliant

SIGNAL UNIT

PHOTO / TECHNICAL DRAWING



DIMENSIONS

Ø x H:

37/40,5 x 30 mm

TECHNICAL SPECIFICATIONS

Body:
Contact termination:
Sound:
Rating:
Current consumption:

Red
Flat terminals, male and female
95 dB (at 30 cm), continuous tone
12-24V
≤ 30mA