

2 POLE 24V PLUG CONTACT

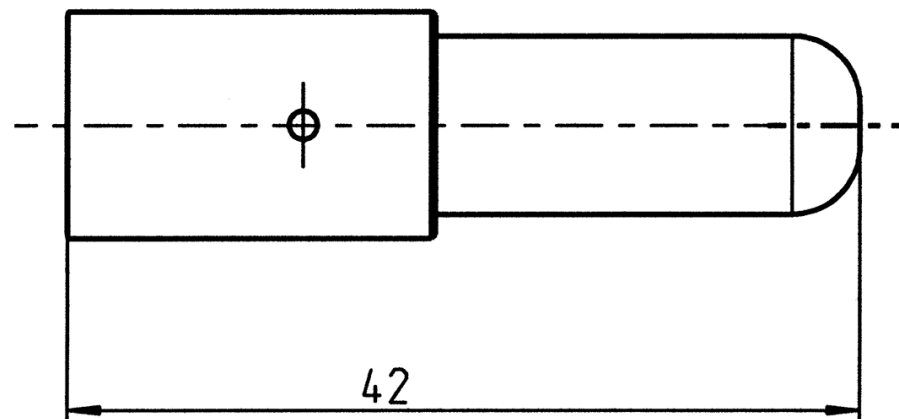
PART NR.
24PL015

COUNTRY OF ORIGIN:
Germany

STANDARDS:
REACH and RoHS compliant
VG 96917

CHARACTERISTICS:
Can be used with plugs 24PL011,
24PL013 and 24PL016

PHOTO / TECHNICAL DRAWING



DIMENSIONS

L: 42 mm

TECHNICAL SPECIFICATIONS

Contact surface:	Silver plated
Contact termination:	Crimp/solder contact
Cable:	For 50 mm ² wire max.
Voltage:	24V
Peak load:	305A
Permanent load:	168A