

2 POLE 24V PLUG CONTACT

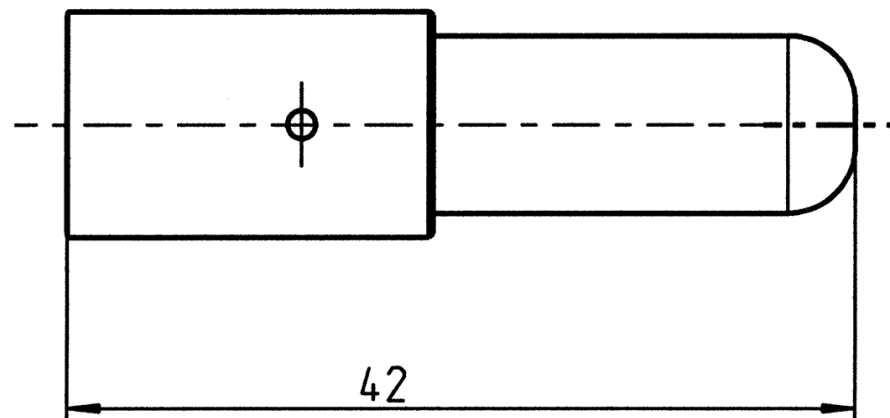
PART NR.
24PL014
(NATO stock no. 5999-12-187-6686)

COUNTRY OF ORIGIN:
Germany

STANDARDS:
REACH and RoHS compliant
VG 96917 P35

CHARACTERISTICS:
Can be used with plugs 24PL010,
24PL012 and PL02P001

PHOTO / TECHNICAL DRAWING



DIMENSIONS

L: 42 mm

TECHNICAL SPECIFICATIONS

Contact surface:	Silver plated
Contact termination:	Crimp/solder contact
Cable:	For 35 mm ² wire max.
Voltage:	24V
Peak load:	245A
Permanent load:	135A