

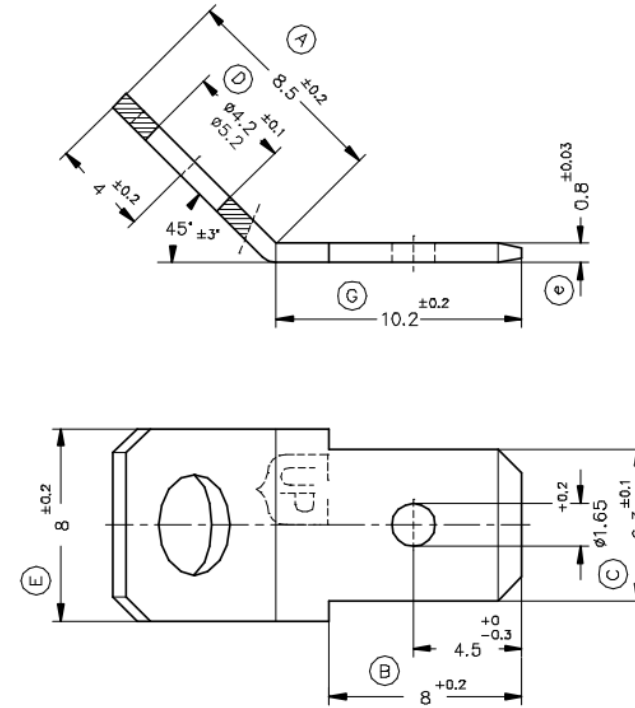
# QUICK DISCONNECT 6.3 TAB - 45°

**PART NR.**  
See dimensions table

**COUNTRY OF ORIGIN**  
Spain

**STANDARDS**  
REACH and RoHS compliant  
DIN 46342

**PHOTO / TECHNICAL DRAWING**



**DIMENSIONS**

Part nr. natural	Part nr. tin plated	Hole size	Tab size	A	G	An- gle	Dimple	UL
08-001-MB-ZA	08-001-MB-TA	Ø 4,2	6.3x0.8	8,5	10,2	45°	dimple hole	
08-110-MB-ZA	08-110-MB-TA	Ø 5,2						

**TECHNICAL SPECIFICATIONS**

Material: Brass, with or without tin plating  
 Max. temperature: Natural 110 °C, tin plated 120 °C