

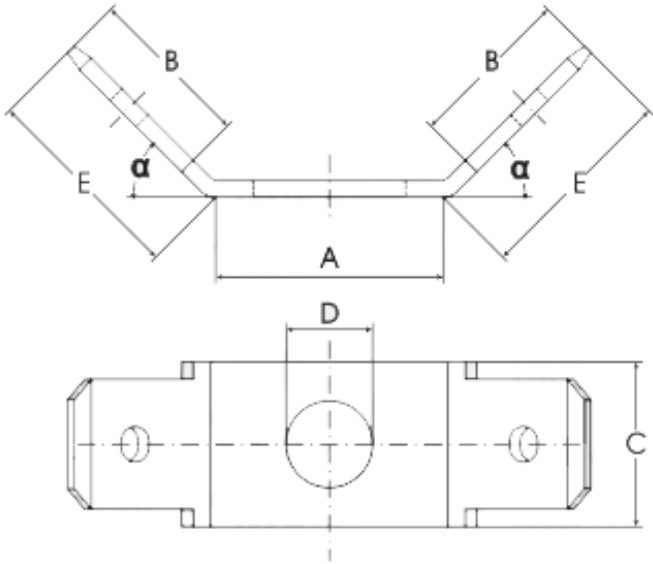
QUICK DISCONNECT 6.3 TAB - 2 x 45°

PART NR.
See dimensions table

COUNTRY OF ORIGIN
Italy

STANDARDS
REACH and RoHS compliant
DIN 46249

PHOTO / TECHNICAL DRAWING



DIMENSIONS

Part nr. natural	Part nr. tin plated	Tab size	Hole size	A	E	C	Dimple/ angle	UL
08-002-MB-ZA	08-002-MB-TA	6.3x0.8	Ø 4,2	11,5	10,0	8,0	dimple holes 45°	
	08-012-MB-TA		Ø 5,2					

TECHNICAL SPECIFICATIONS

Material: Brass, with or without tin plating
 Max. temperature: Natural -30~105 °C, tin plated -30~150 °C