

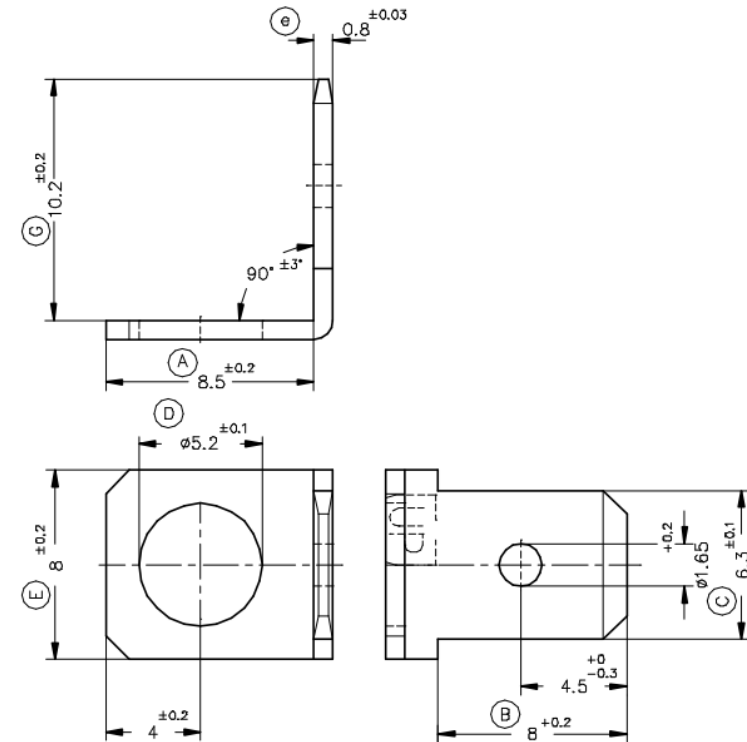
QUICK DISCONNECT 6.3 TAB - 90°

PART NR.
See dimensions table

COUNTRY OF ORIGIN
Spain

STANDARDS
REACH and RoHS compliant
DIN 46342

PHOTO / TECHNICAL DRAWING



DIMENSIONS

Part nr. natural	Part nr. tin plated	Hole size	Tab size	A	G	Angle	Dimple	UL
90-011-MB-ZA		Ø 5,2	6.3x0.8	8,5	10,2	90°	dimple hole	

TECHNICAL SPECIFICATIONS

Material: Brass
Max. temperature: 110 °C