

OPEN BARREL MALE DISCONNECTOR - 4.8 TAB

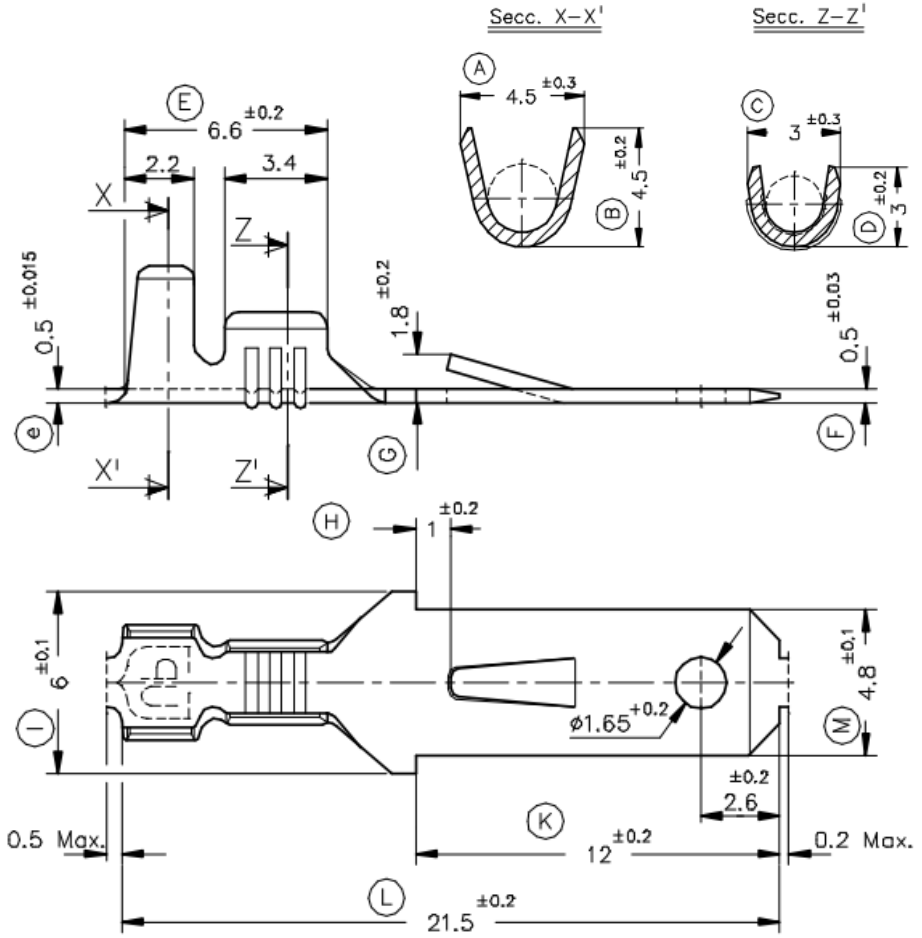
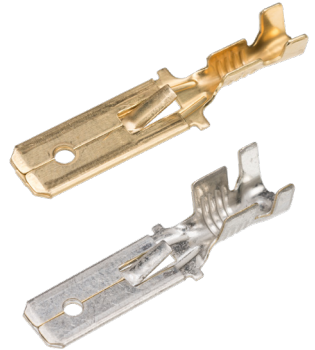
PART NR.
See dimensions table
MS on strip
ML loose piece

COUNTRY OF ORIGIN
Spain

STANDARDS
REACH and RoHS compliant

TECHNICAL SPECIFICATIONS
Material: Brass, with or without tin plating
Max. temperature: Natural 110 °C, tin plated 120 °C
Max. rated current: 0,50 mm² 8A
0,75 mm² 10A
1,00 mm² 12A

PHOTO / TECHNICAL DRAWING



DIMENSIONS

Wire range	Part nr. natural	Part nr. tin plated	Tab-size	L	K	M	Dimple/locking tab	MOQ	UL
0,5-1,0	01-006-ML-ZA	01-006-ML-TA	4,8x0,5	21,5	12	4,8	dimple hole/locking tab	1.000	

CRIMPING PARAMETERS & PULL-OUT FORCE

Wire section (± 10%)	Conductor		Insulator	Pull-out force (N)
	Height (mm)	Width (mm)	Width (mm)	
0,50 mm ²	1,45 (± 0,03)	2,54 (± 0,03)	3,54 (± 0,10)	56N@60s
0,75 mm ²	1,55 (± 0,05)	2,55 (± 0,05)	3,55 (± 0,10)	84N@60s
1,00 mm ²	1,65 (± 0,05)	2,56 (± 0,05)	3,56 (± 0,10)	108N@60s