

PART NR.

See dimensions table

MS on strip

ML loose piece

COUNTRY OF ORIGIN

Spain

STANDARDS

REACH and RoHS compliant

UL listed

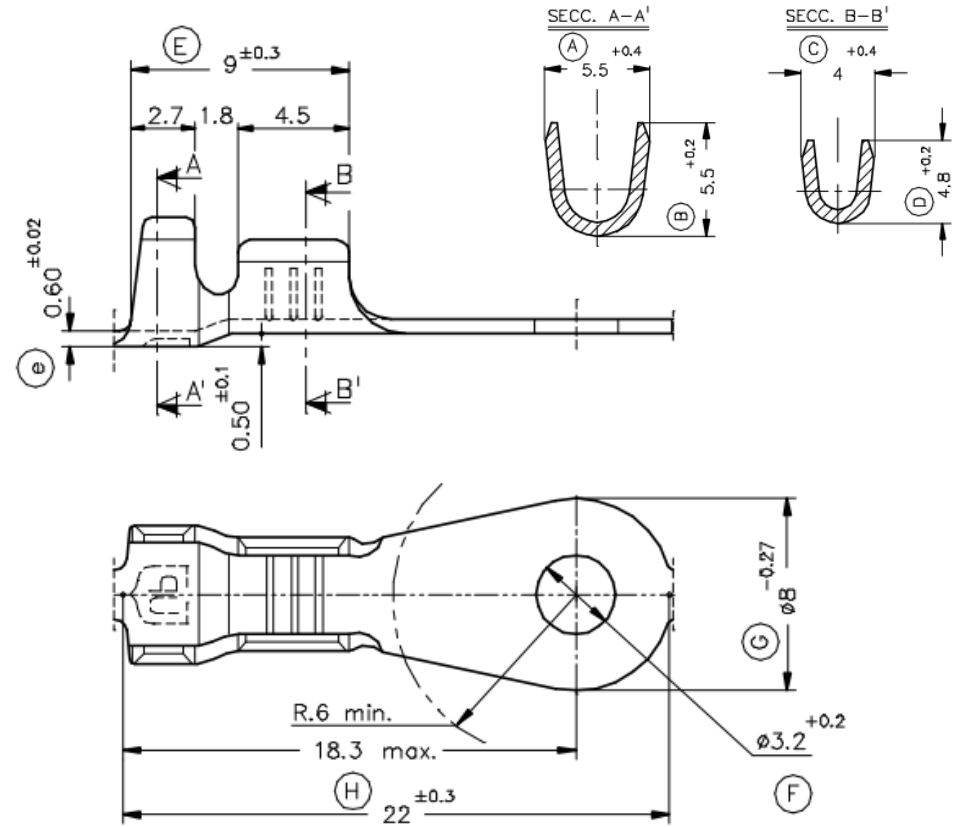
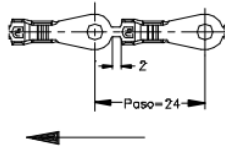
TECHNICAL SPECIFICATIONS

Material: Brass, with or without tin plating

Max. temperature: Natural 110 °C, tin plated 120 °C

Max. rated current: 1,00 mm² 12A
1,50 mm² 16A
2,50 mm² 20A

PHOTO / TECHNICAL DRAWING



DIMENSIONS

Wire range	Part nr. natural	Part nr. tin plated	Hole size	H	G	Pcs/roll MOQ	UL
1,0~2,5	03-005-MS-ZA	03-005-MS-TA	Ø 3,2	22,0	8,0	6.000	✓
	03-005-ML-ZA	03-005-ML-TA				1.000	✓

CRIMPING PARAMETERS & PULL-OUT FORCE

Terminal	Wire section (± 10%)	Conductor		Insulator	Pull-out force (N)
		Height (mm)	Width (mm)	Width (mm)	
03-005-Mx-xA	1,00 mm ²	2,05 (± 0,05)	3,22 (± 0,05)	4,06 (± 0,10)	108N@60s
	1,50 mm ²	2,15 (± 0,05)	3,50 (± 0,05)	4,08 (± 0,10)	150N@60s
	2,00 mm ²	2,25 (± 0,05)	3,51 (± 0,05)	4,09 (± 0,10)	150N@60s
	2,50 mm ²	2,35 (± 0,05)	3,53 (± 0,05)	4,12 (± 0,10)	230N@60s