

# OPEN BARREL MALE DISCONNECTOR - 4.8 TAB DIMPLE ONLY

**PART NR.**

See dimensions table

MS on strip

ML loose piece

**COUNTRY OF ORIGIN**

Spain

**STANDARDS**

REACH and RoHS compliant

UL listed

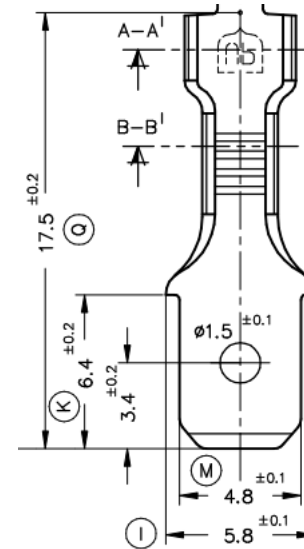
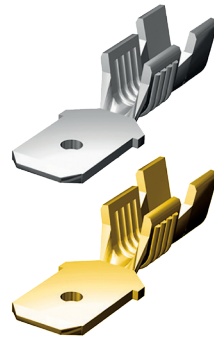
**TECHNICAL SPECIFICATIONS**

**Material:** Brass, with or without tin plating

**Max. temperature:** Natural 110 °C, tin plated 120 °C

**Max. rated current:** 0,50 mm<sup>2</sup> 8A  
0,75 mm<sup>2</sup> 10A  
1,00 mm<sup>2</sup> 12A  
1,50 mm<sup>2</sup> 16A  
2,50 mm<sup>2</sup> 20A


**PHOTO / TECHNICAL DRAWING**

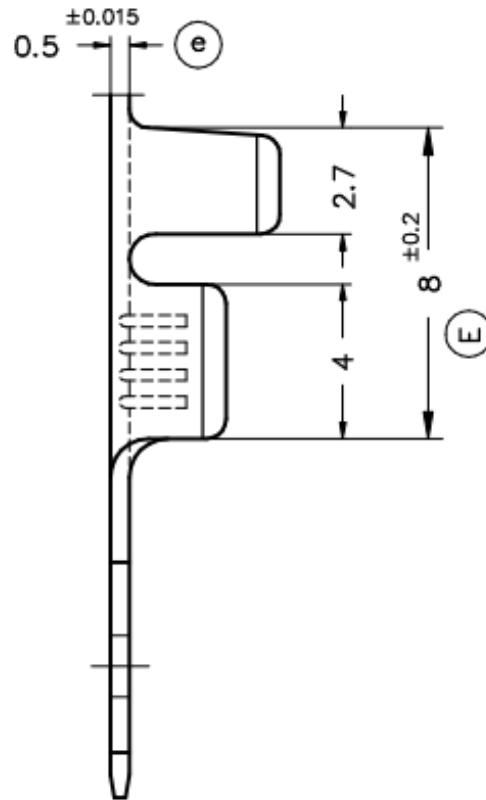
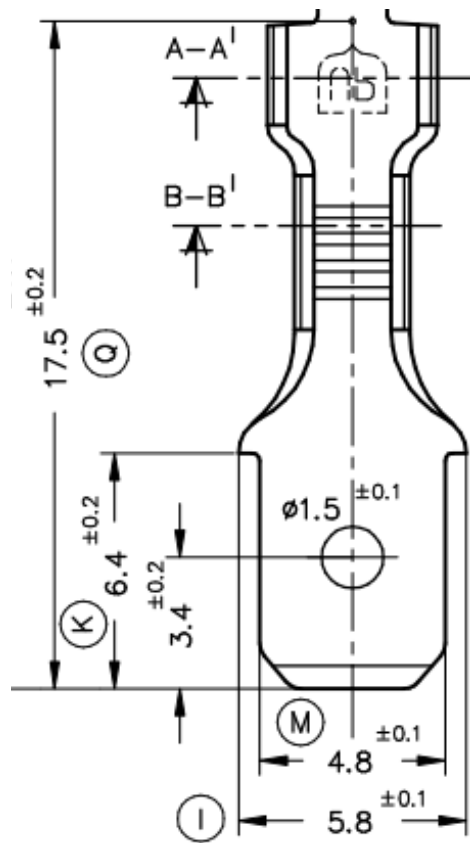


**DIMENSIONS**

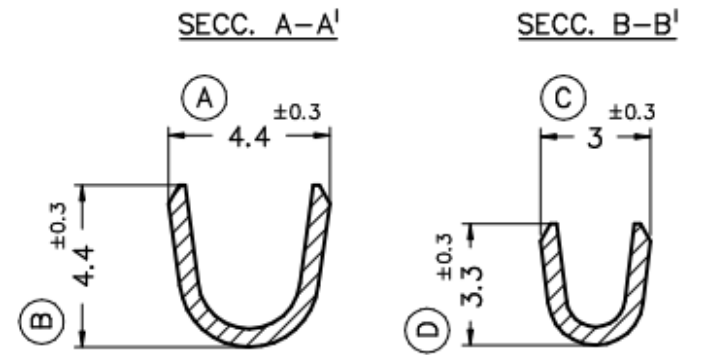
Wire range	Part nr. natural	Part nr. tin plated	Tab-size	Q	K	M/I	Dimple/locking tab	MOQ	UL
0,5~1,0	01-004-ML-ZA	01-004-ML-TA	4,8x0,5	17,5	6,4	4,8/5,8	dimple hole	1.000	✓
0,75~2,0	01-005-ML-ZA	01-005-ML-TA							✓

**CRIMPING PARAMETERS & PULL-OUT FORCE**

Terminal	Wire section (± 10%)	Conductor 			Insulator		Pull-out force (N)
		Height (mm)	Width (mm)	Height (mm)	Width (mm)		
01-004-ML-xA	0,50 mm <sup>2</sup>	1,50 (± 0,03)	2,86 (± 0,03)		3,75 (± 0,10)	56N@60s	
	0,75 mm <sup>2</sup>	1,60 (± 0,05)	2,87 (± 0,05)		3,75 (± 0,10)	84N@60s	
	1,00 mm <sup>2</sup>	1,70 (± 0,05)	2,88 (± 0,05)		3,77 (± 0,10)	108N@60s	
01-005-ML-xA	0,75 mm <sup>2</sup>	1,85	3,26	3,50	4,19	189N	
	1,00 mm <sup>2</sup>	2,00	3,27	3,65	4,19	250N	
	1,25 mm <sup>2</sup>	2,10	3,28	3,85	4,19	311N	
	2,00 mm <sup>2</sup>					320N	



0,5-1,0 mm<sup>2</sup>



0,75-2,0 mm<sup>2</sup>

