

PART NR.
See dimensions table

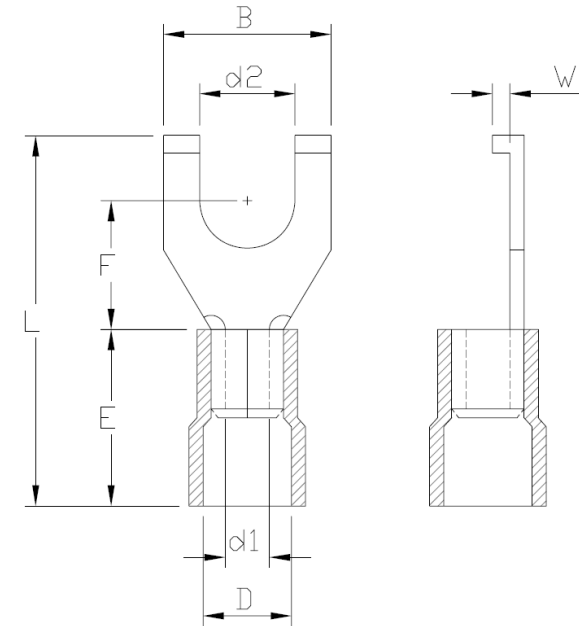
COUNTRY OF ORIGIN:
Taiwan

STANDARDS:
REACH and RoHS compliant

UL listed

PVC FLANGE SPADE TERMINAL - STANDARD

PHOTO / TECHNICAL DRAWING



DIMENSIONS

Wire range	Part nr.	d2	B	F	L	E	D	d1	W	UL
16~14 AWG	BFV 2-4B	4,3	7,2	6,5	19,7	10,0	4,5	2,3	1,5	✓
1,5~2,5 mm ²	BFV 2-5B	5,3	8,5	7,3	20,5	10,0	4,5	2,3	1,5	✓

TECHNICAL SPECIFICATIONS

Terminal: Copper, tin plated
Insulation: Vinyl (PVC)
Operating temperature: -10~75 °C
Max. electrical current: 600V
Max. electrical rating: blue 27A