

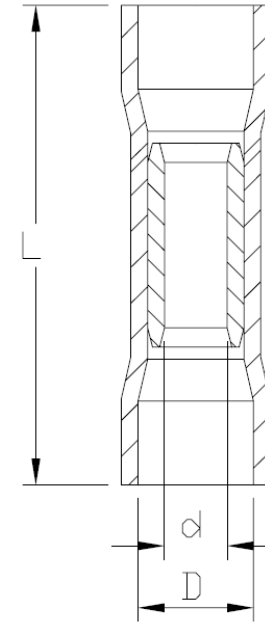
PART NR.  
See dimensions table

COUNTRY OF ORIGIN:  
Taiwan

STANDARDS:  
REACH and RoHS compliant

## PVC PARALLEL CONNECTOR - STANDARD

### PHOTO / TECHNICAL DRAWING



### DIMENSIONS

Wire range	Part nr.	L	D	d	Packed	UL
22~16 AWG 0,5~1,5 mm <sup>2</sup>	BFVP 1.25	18,0	4,1	1,6	10 x 100	
16~14 AWG 1,5~2,5 mm <sup>2</sup>	BFVP 2	18,0	4,5	2,3	10 x 100	
12~10 AWG 4~6 mm <sup>2</sup>	BFVP 5.5	21,0	6,5	3,6	10 x 100	

### TECHNICAL SPECIFICATIONS

Terminal: Copper, tin plated  
Insulation: Vinyl (PVC)  
Operating temperature: -10~75 °C  
Max. electrical current: 600V  
Max. electrical rating:  
red 19A  
blue 27A  
yellow 48A