

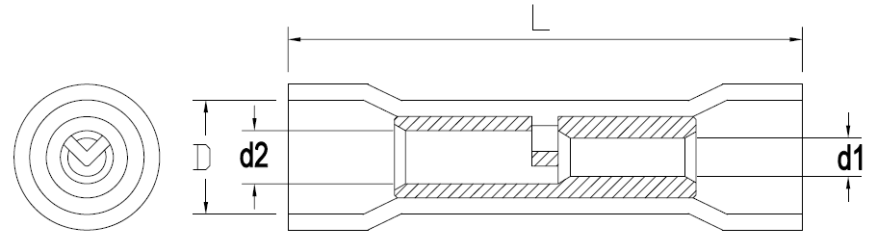
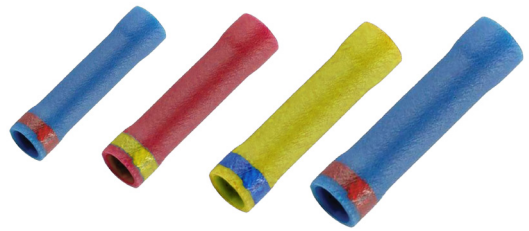
PVC STEP-DOWN BUTT CONNECTOR - STANDARD

PART NR.
See dimensions table

COUNTRY OF ORIGIN:
Taiwan

STANDARDS:
REACH and RoHS compliant

PHOTO / TECHNICAL DRAWING



DIMENSIONS

Wire range	Part nr.	d1	d2	D	L	UL
16~14 to 22~18 AWG 1,5~2,5 to 0,5~1,0 mm ²	BFVC 2-1.25	1,7	2,3	4,5	26,0	
12~10 to 16~14 AWG 4~6 to 1,5~2,5 mm ²	BFVC 5.5-2	2,3	3,4	6,5	31,0	
8 to 12~10 AWG 8 to 4~6 mm ²	BFVC 8-5.5	3,4	4,5	8,5	35,7	
6 to 8 AWG 14 to 8 mm ²	BFVC 14-8	4,5	5,9	10,5	45,0	

TECHNICAL SPECIFICATIONS

Terminal: Copper, tin plated
 Insulation: Vinyl (PVC)
 Operating temperature: -10~75 °C
 Max. electrical current: 600V
 Max. electrical rating: blue-red 19A
 yellow-blue 27A
 red-yellow 48A
 blue-red 70A