

# NYLON MALE DISCONNECTOR FULLY INSULATED - EASY ENTRY

**PART NR.**

See dimensions table

**COUNTRY OF ORIGIN:**

Taiwan

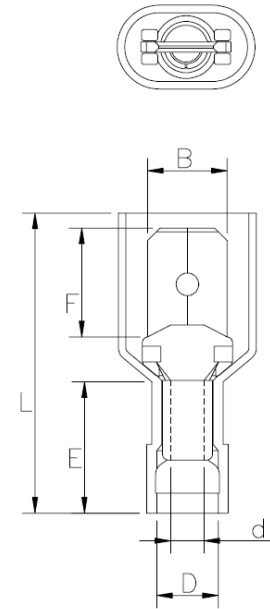
**STANDARDS:**

REACH and RoHS compliant

Halogen free

UL listed

**PHOTO / TECHNICAL DRAWING**



**DIMENSIONS**

Wire range	Part nr.	tab	B	F	L	E	D	d1	UL
22~16 AWG 0,5~1,5 mm <sup>2</sup>	ELNDDM 1.25-250A	6,3x0,8	6,4	7,9	23,5	10,5	4,2	1,7	✓
16~14 AWG 1,5~2,5 mm <sup>2</sup>	ELNDDM 2-250	6,3x0,8	6,4	7,9	23,5	10,5	4,9	2,3	✓
12~10 AWG 4~6 mm <sup>2</sup>	ELNDDM 5.5-250A	6,3x0,8	6,4	7,9	27,0	13,0	6,5	3,4	✓

**TECHNICAL SPECIFICATIONS**

Terminal:	Brass, tin plated
Insulation:	Nylon (PA 66)
Operating temperature:	-40~105 °C
Max. electrical current:	300V
Max. electrical rating:	red 10A blue 15A yellow 24A