

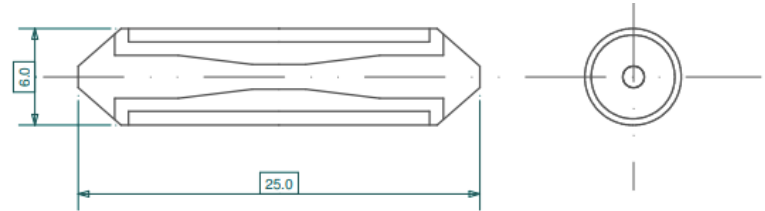
PART NR.
See rating table

COUNTRY OF ORIGIN:
Italy

STANDARDS:
REACH and RoHS compliant
DIN 72581-1

- CHARACTERISTICS**
- DIN 72581-1 standard
 - Zn or Cu fusing material depending on rating
 - Thermoplastic body material

PHOTO / TECHNICAL DRAWING



DIMENSIONS

L x Ø: 25 x 6 mm

RATING TABLE

Part nr.	Color	Rating (A)	Rating (V)
CERF2005	yellow	5	32
CERF2008	white	8	32
CERF2016	red	16	32
CERF2025	blue	25	32
CERF2040*	black	40	32

* Not to standard DIN 72581-1

TECHNICAL SPECIFICATIONS

Body: Thermoplastic, color coded
 Element: Zinc (5~16A)
 Copper (25~40A)