

PART NR.
STAS005

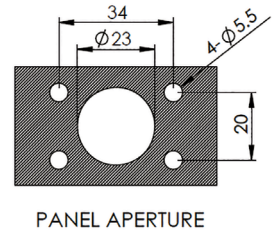
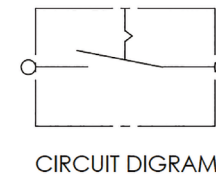
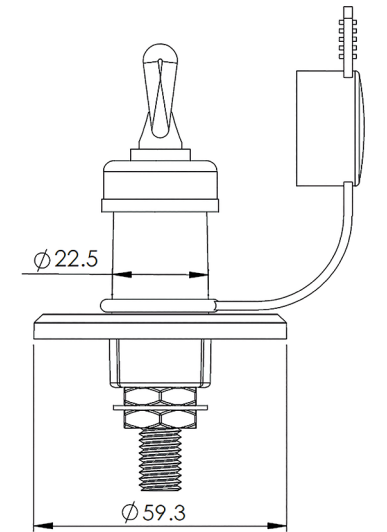
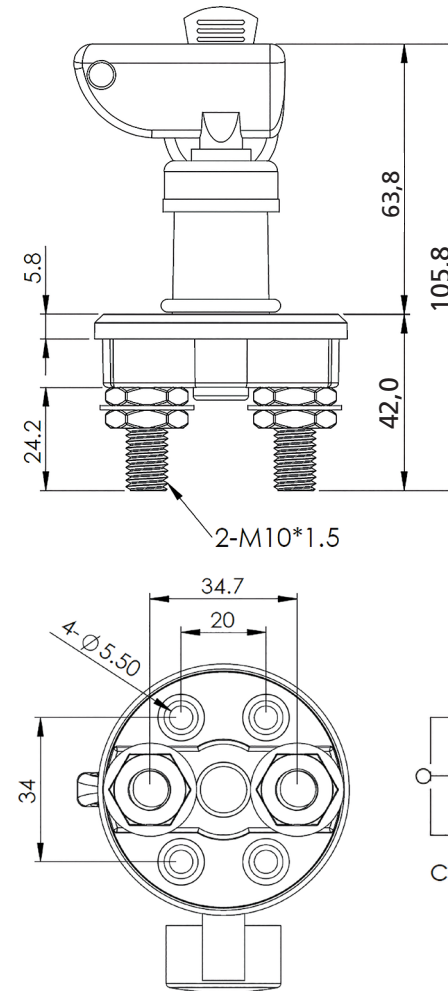
COUNTRY OF ORIGIN:
Taiwan

STANDARDS:
REACH and RoHS compliant

CHARACTERISTICS:

- Single pole single throw switch
- The key is only removable in the Off-position
- With waterproof rubber covers

PHOTO / TECHNICAL DRAWING



DIMENSIONS

Ø x H:

59,3 x 104,6 mm

TECHNICAL SPECIFICATIONS

Contact termination:

Positions:

Panel aperture:

Rating:

M10x1,5xL24,2 stud terminals, copper

Off-On

Ø 23 mm, screw holes 20 and 34 mm apart

12V, 300A continuous, 800A intermittent