

PART NR.
STAS003

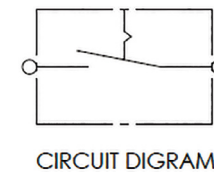
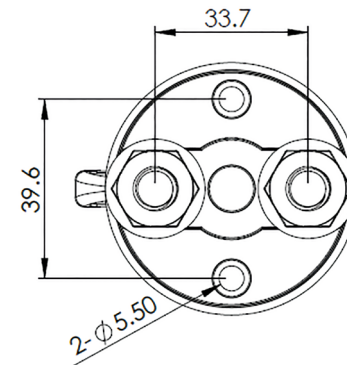
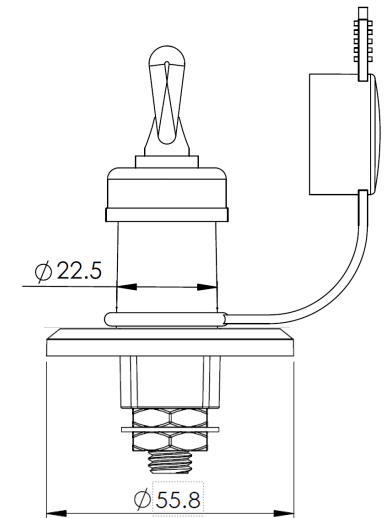
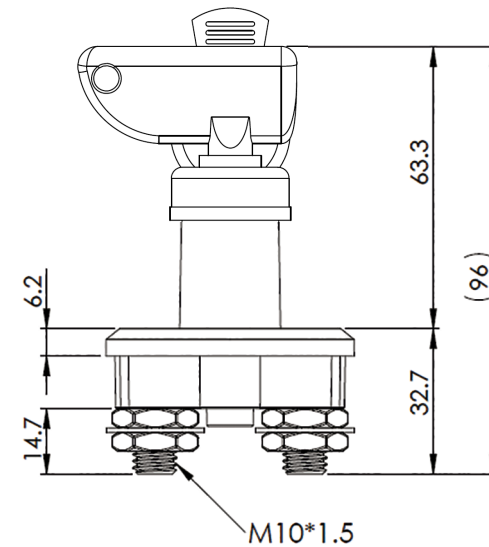
COUNTRY OF ORIGIN:
Taiwan

STANDARDS:
REACH and RoHS compliant

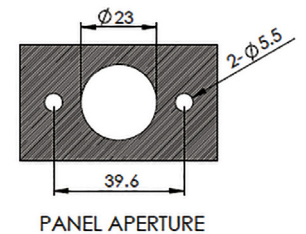
CHARACTERISTICS:

- Single pole single throw switch
- The key is only removable in the Off-position
- With waterproof rubber covers

PHOTO / TECHNICAL DRAWING



CIRCUIT DIGRAM



PANEL APERTURE

DIMENSIONS

Ø x H:

55,8 x 96,0 mm

TECHNICAL SPECIFICATIONS

Contact termination:

Positions:

Panel aperture:

Rating:

M10xP1,5xL1,47 stud terminals, copper

Off-On

Ø 23 mm, screw holes 39,6 mm apart

12V, 300A continuous, 800A intermittent